

Overview of Cook County Justice System Activities

Prepared for the Illinois Governor's
Commission on Criminal Justice and
Sentencing Reform

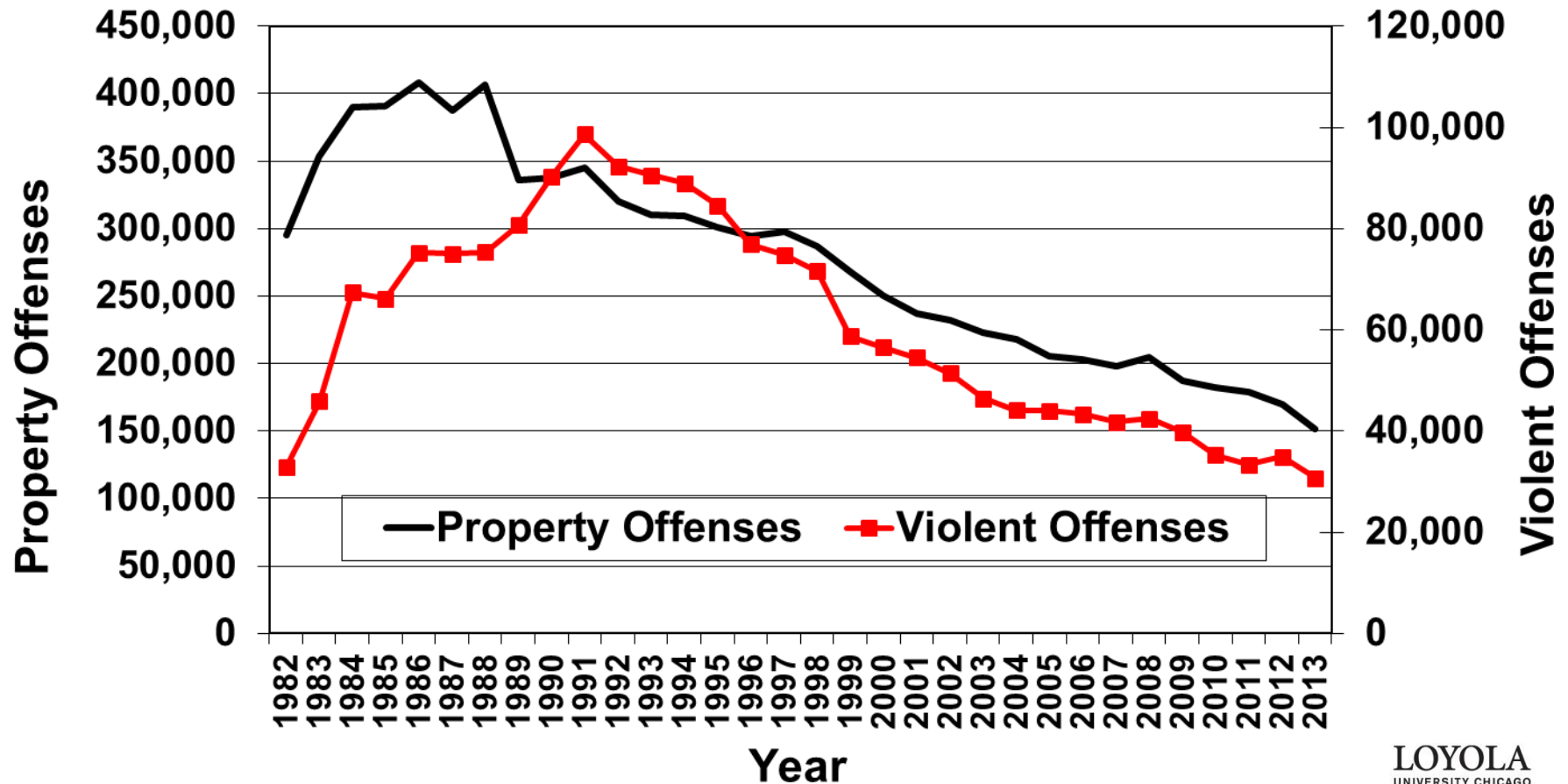
Prepared by David E. Olson, Ph.D. &
Donald Stemen, Ph.D.,

Department of Criminal Justice and
Criminology

Accompanies July 21, 2015 memo



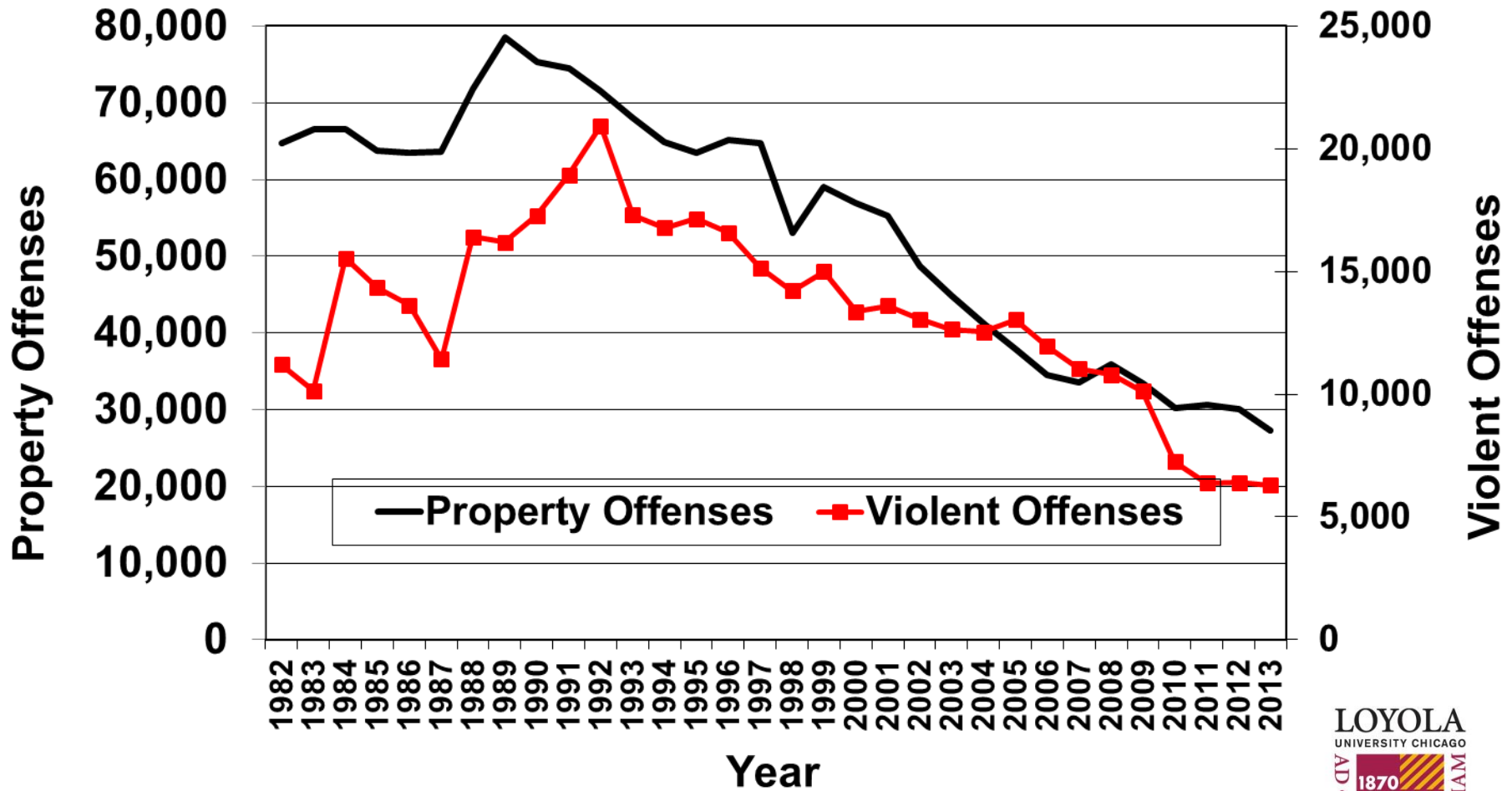
Figure 1: Trends in *Crimes Reported to the Police in Cook County*



Source: Analyses of aggregate, published I-UCR data by David E. Olson, Ph.D. & Donald Stemen, Ph.D.



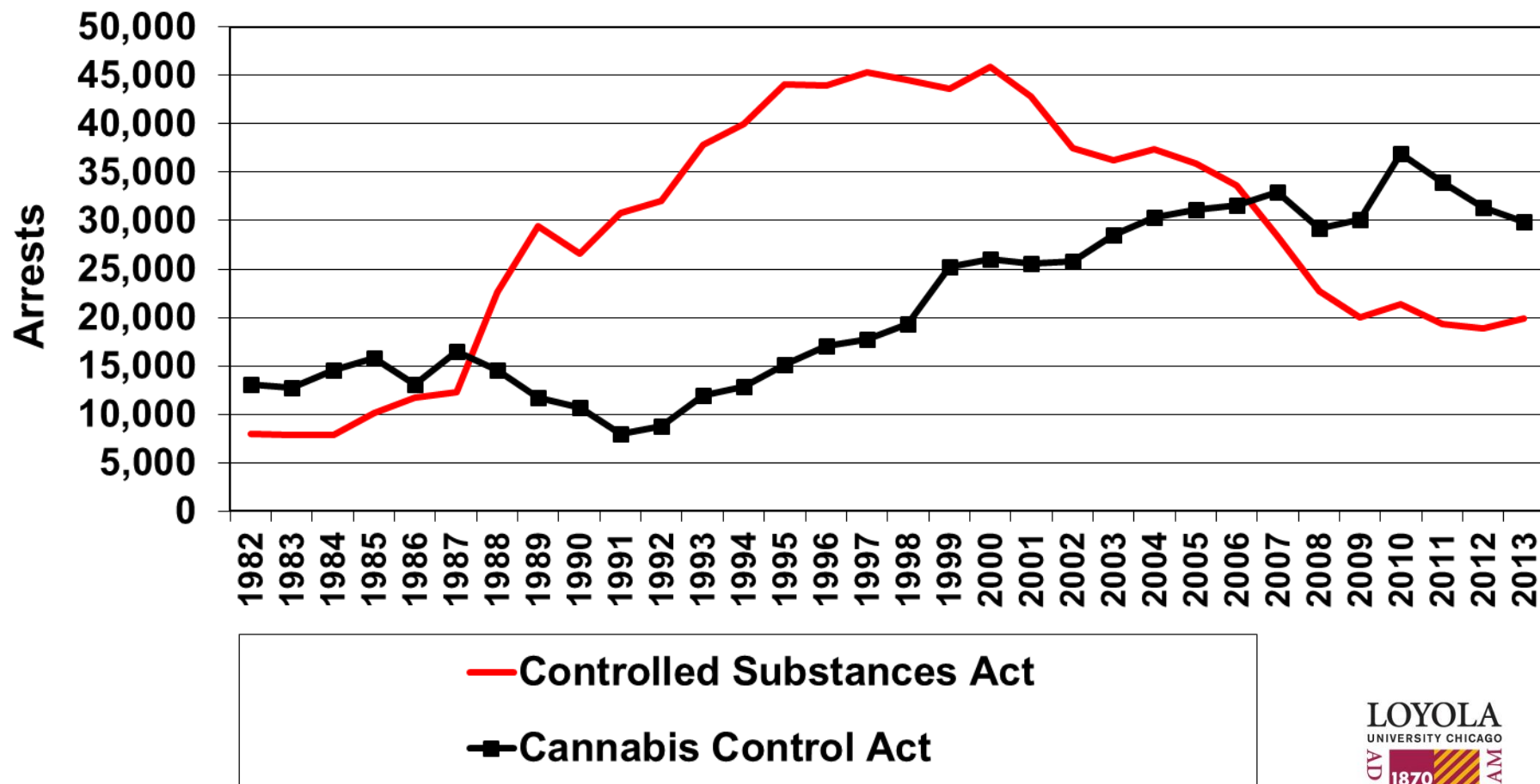
Figure 2: Trends in *Arrests Made* by the Police in Cook County



Source: Analyses of aggregate, published I-UCR data by David E. Olson, Ph.D. & Donald Stemen, Ph.D.



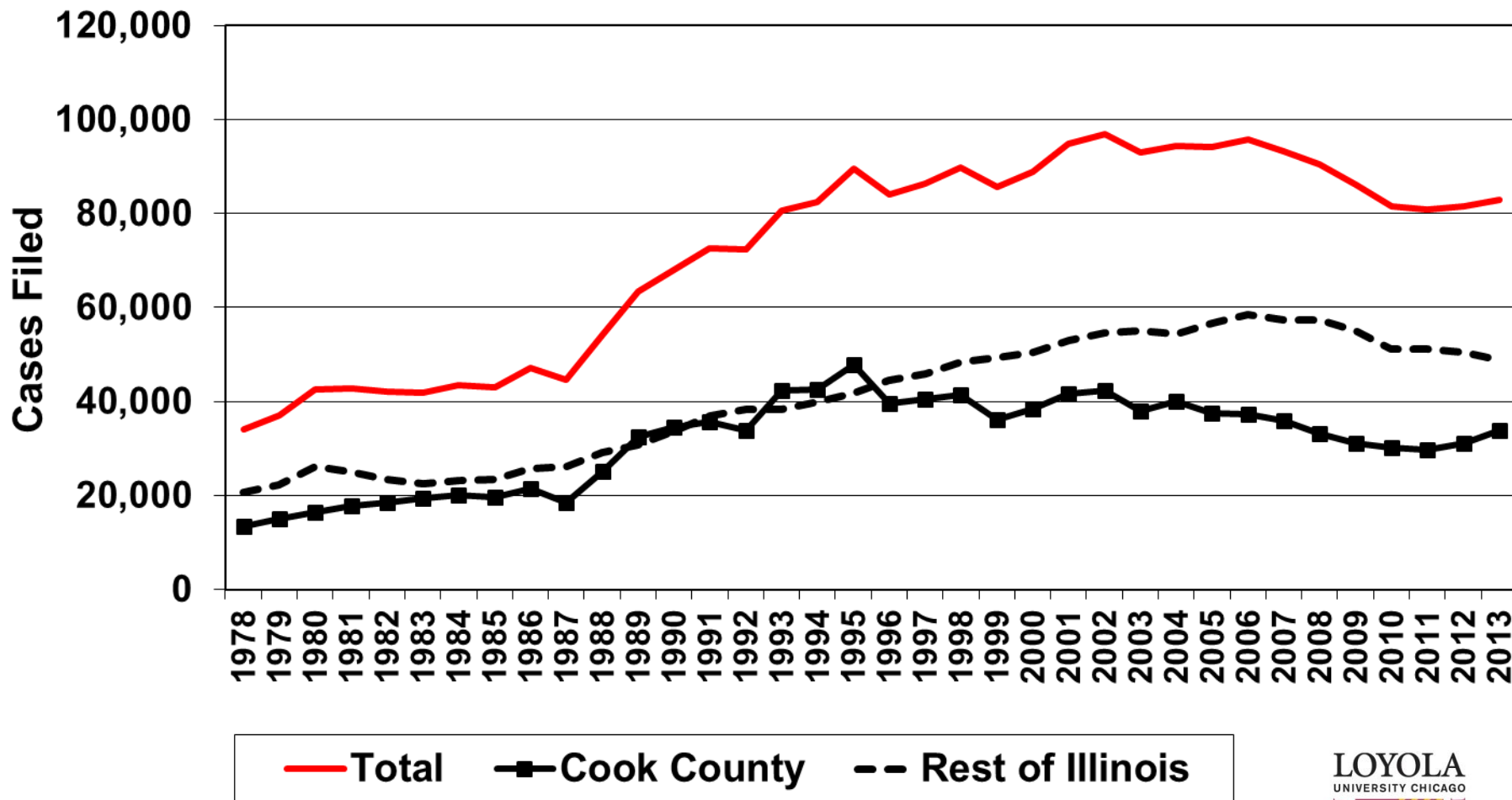
Figure 3: Trends in Drug-Law Violations Arrests in Cook County



Source: Analyses of aggregate, published I-UCR data
by David E. Olson, Ph.D. & Donald Stemen, Ph.D.



Figure 4: Trends in Felony *Filings* in Illinois' Circuit Courts



Source: Analyses of aggregate, published AOIC data by David E. Olson & Donald Stemen.
 Available data cannot be disaggregated by crime type or felony class



Figure 4a: Trends in Felony *Filings* in Cook County, by Felony Class, 2000-2012

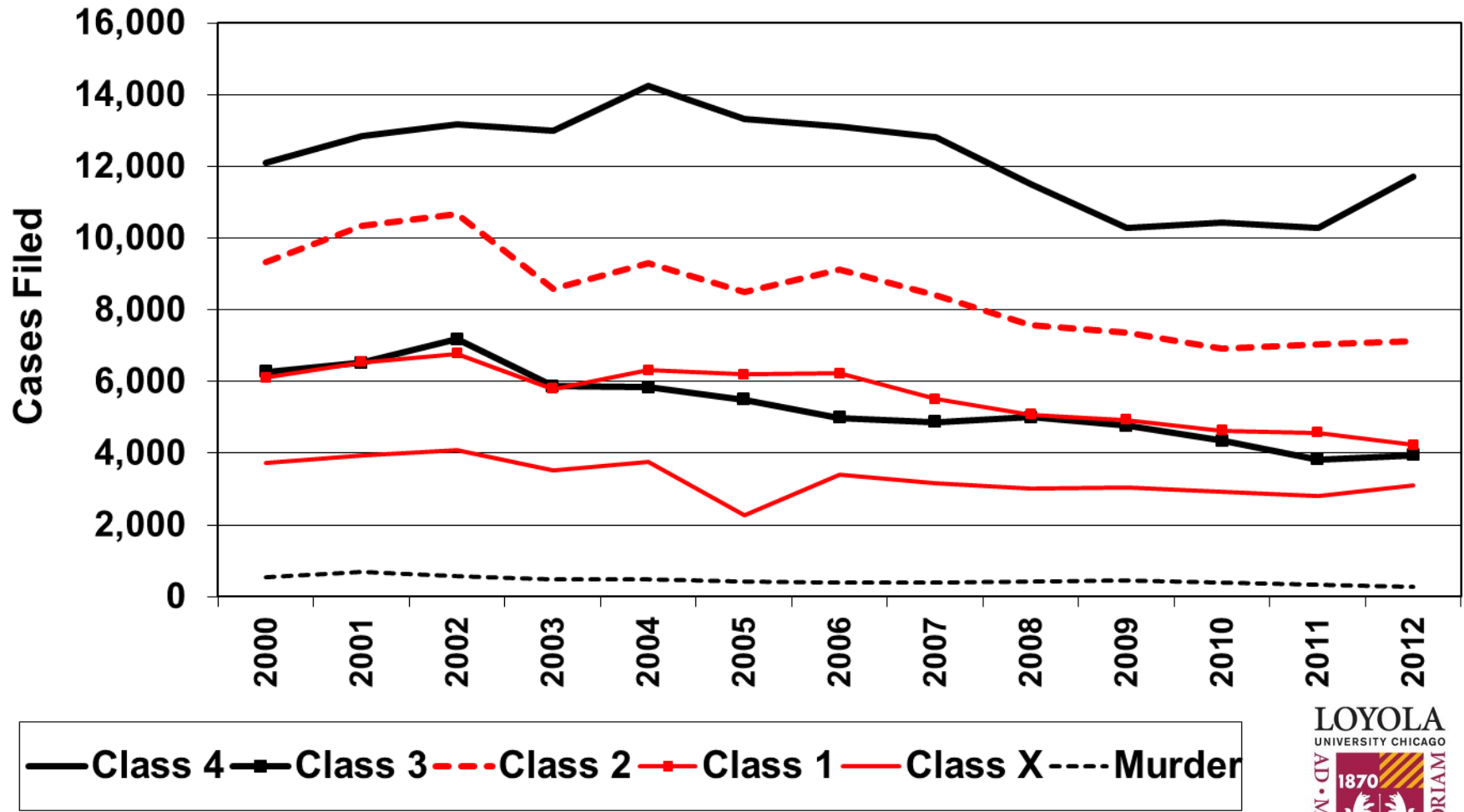
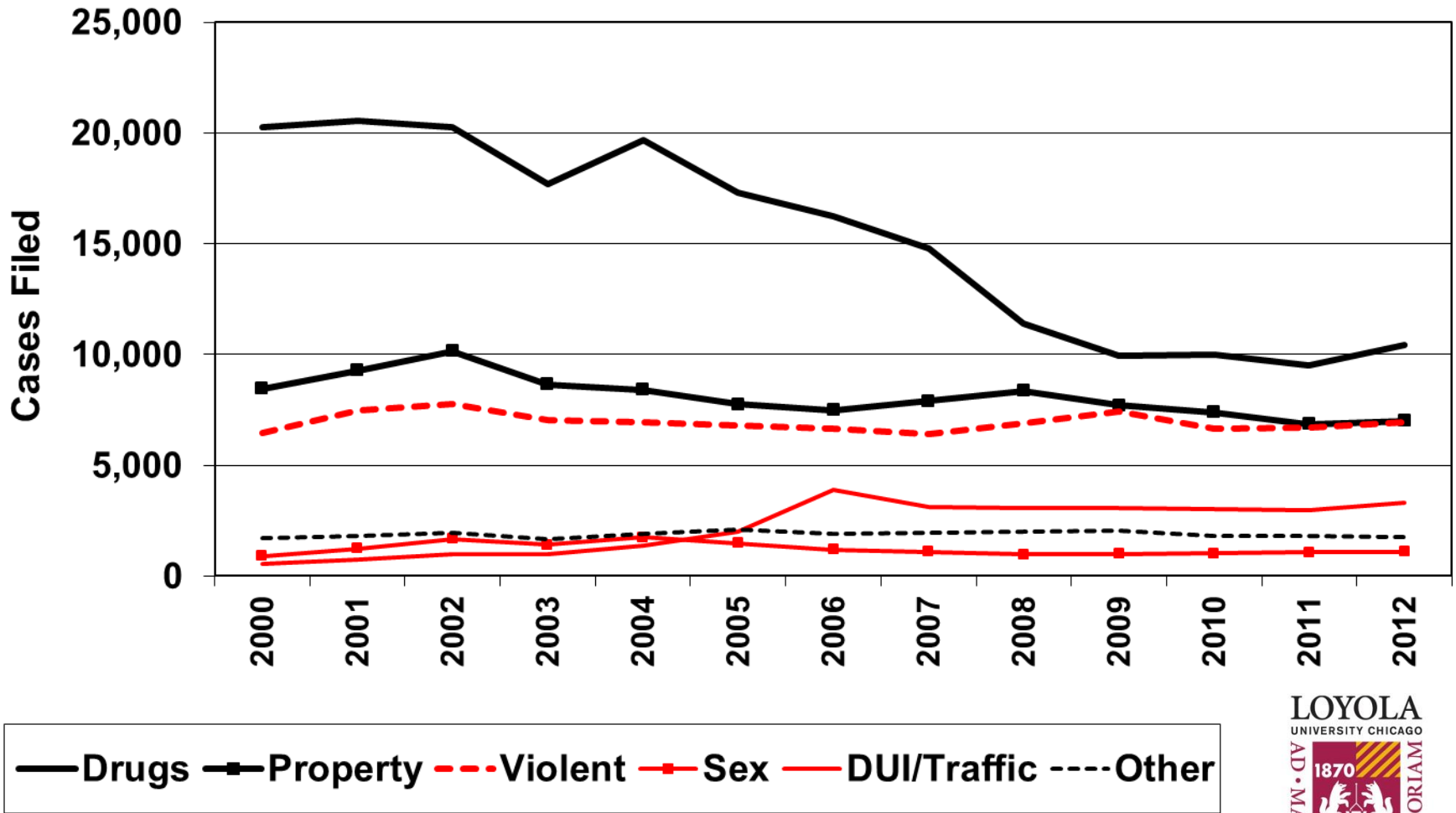


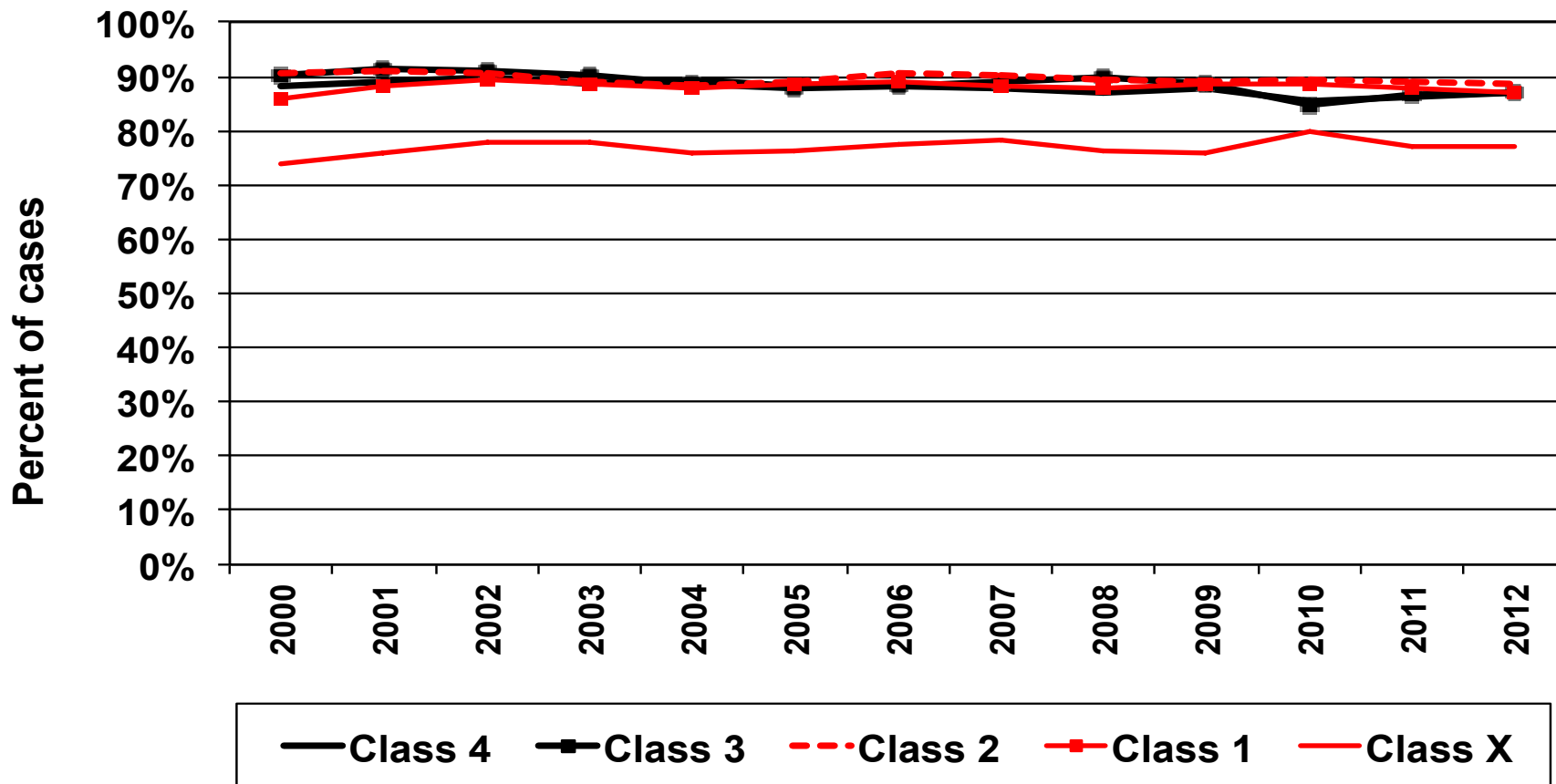
Figure 4b: Trends in Felony *Filings* in Cook County, by Crime Type, 2000-2012



Source: Analyses of Cook County Court data by David E. Olson & Donald Stemen.

Preparing people to lead extraordinary lives

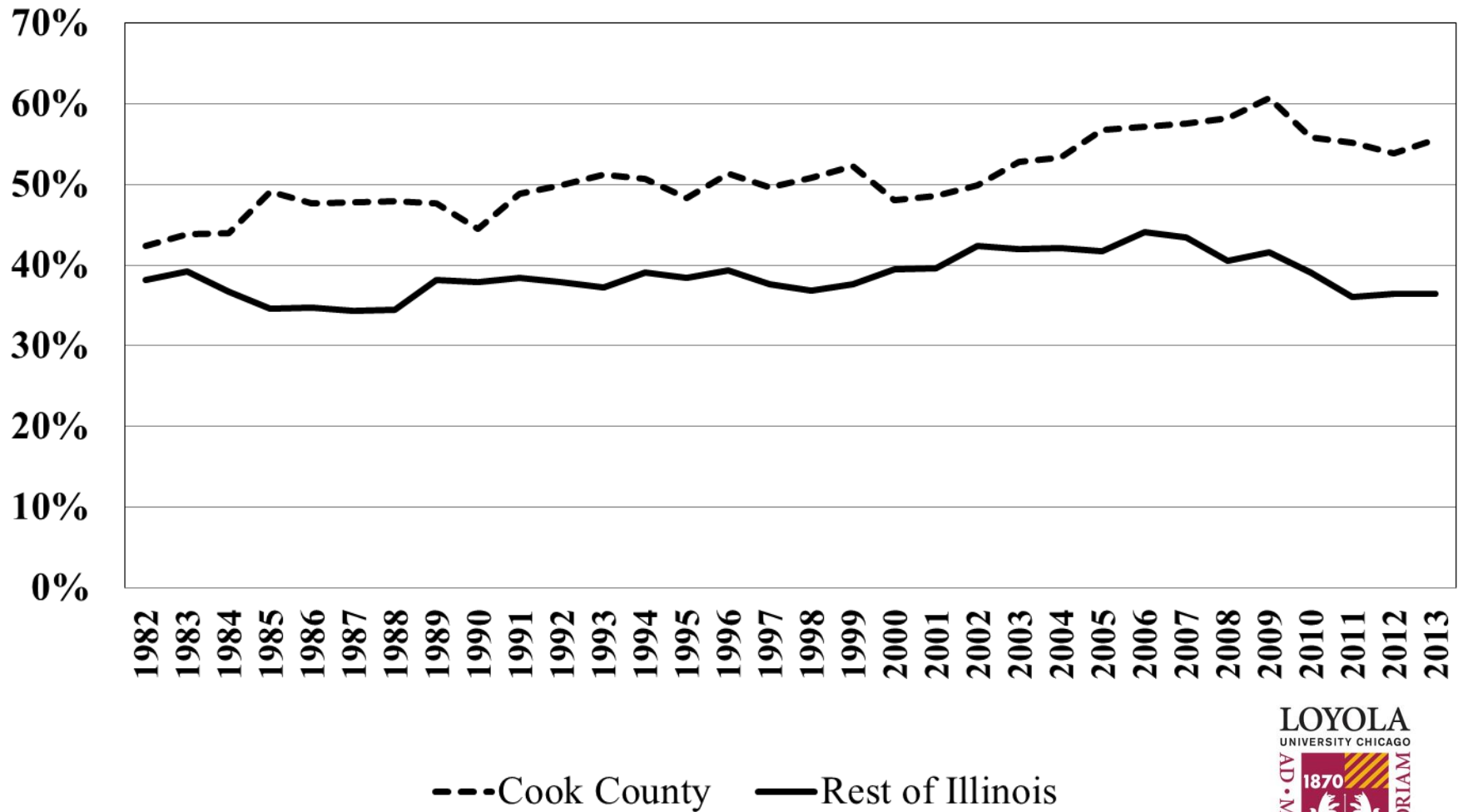
Figure 4c: Percent of Felony Cases Resulting in Conviction Cook County, 2000-2012



Source: Analyses of Cook County Court data by David E. Olson & Donald Stemen.



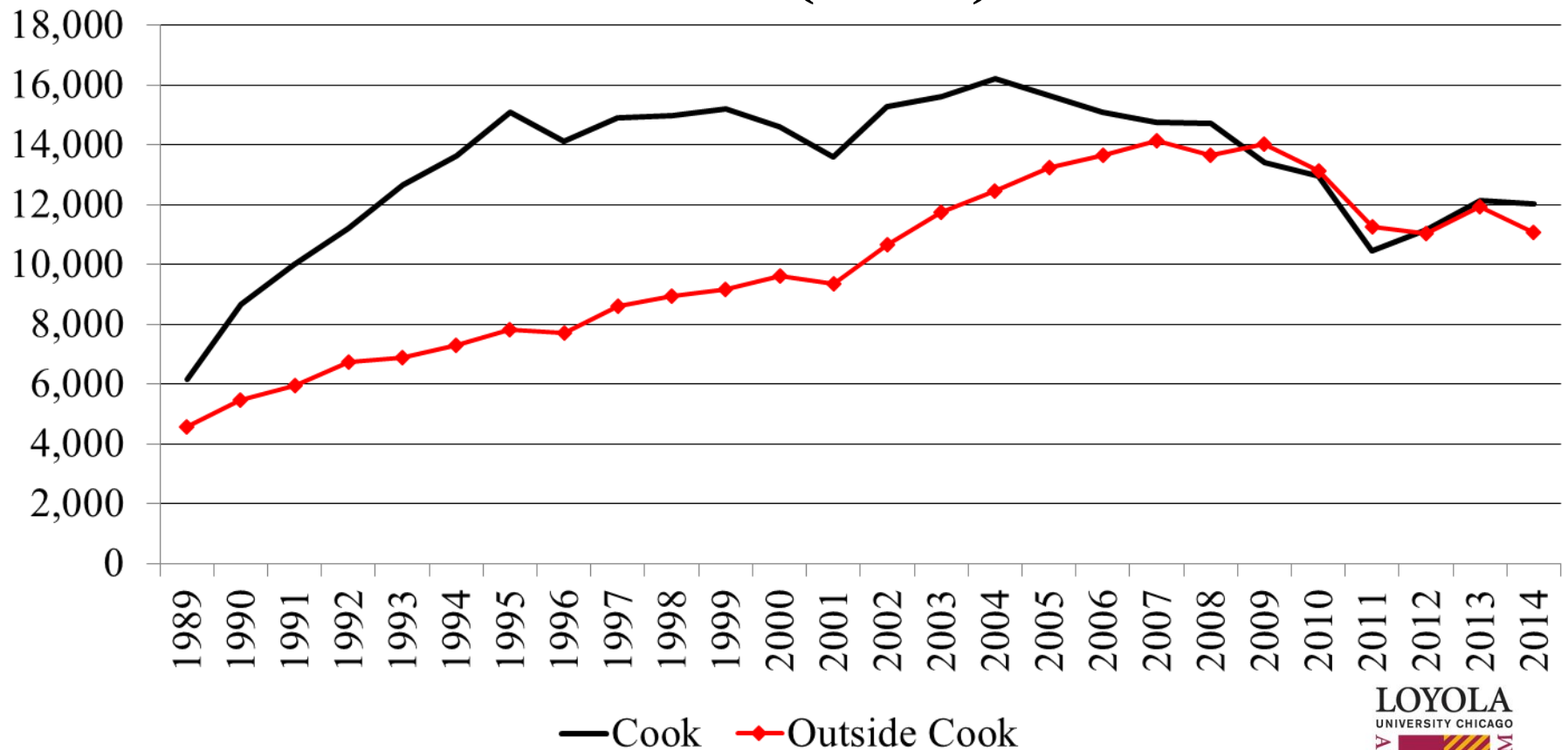
Figure 5: Percent of Convicted Felons to Prison, by Region of Illinois



Source: Analyses of aggregate, published AOIC data by David E. Olson & Donald Stemen. 2003 data adjusted



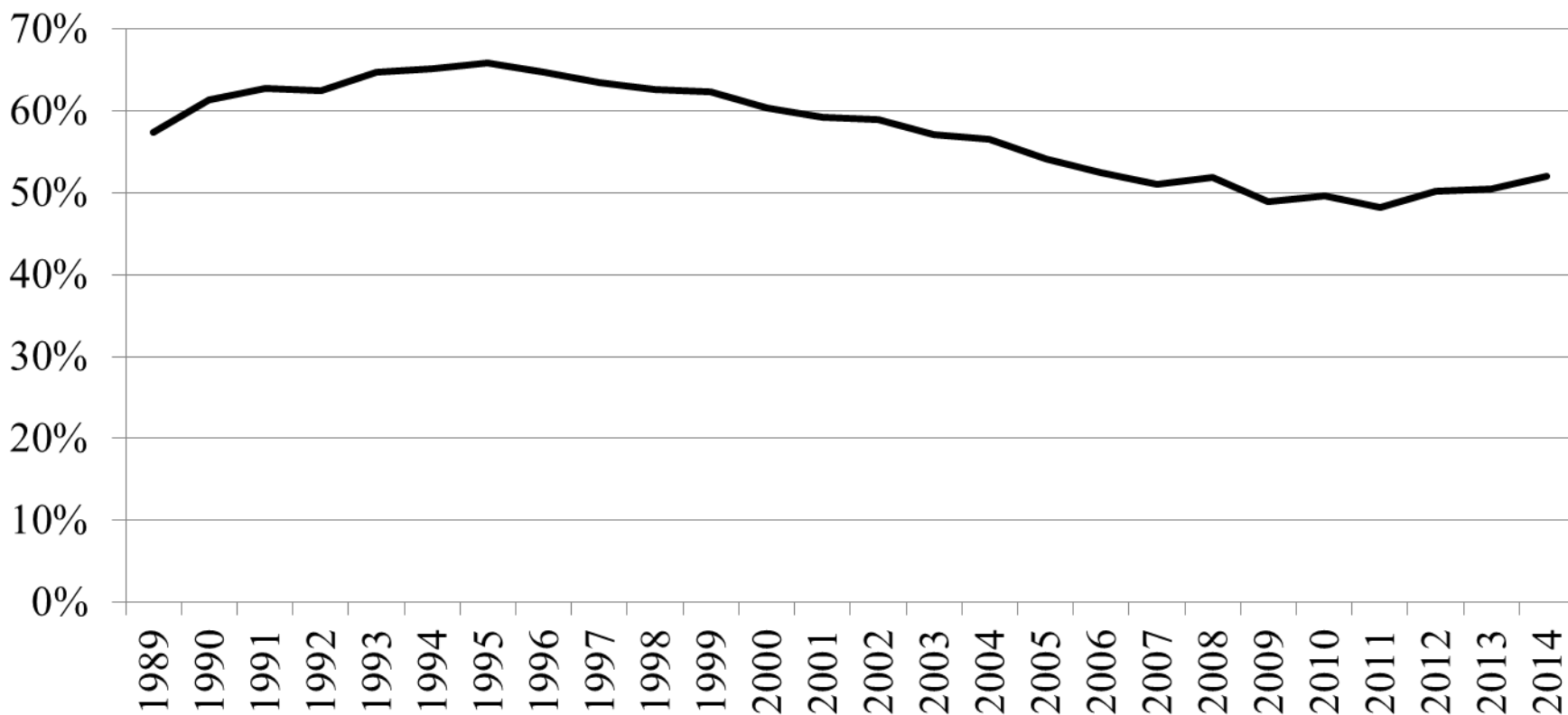
Figure 6: Court Admissions to IDOC, Cook County vs. Rest of Illinois, by State Fiscal Year (SFY)



Analyses by David E. Olson, Ph.D. & Donald Stemen, Ph.D., of data provided by the IDOC Planning and Research Unit.



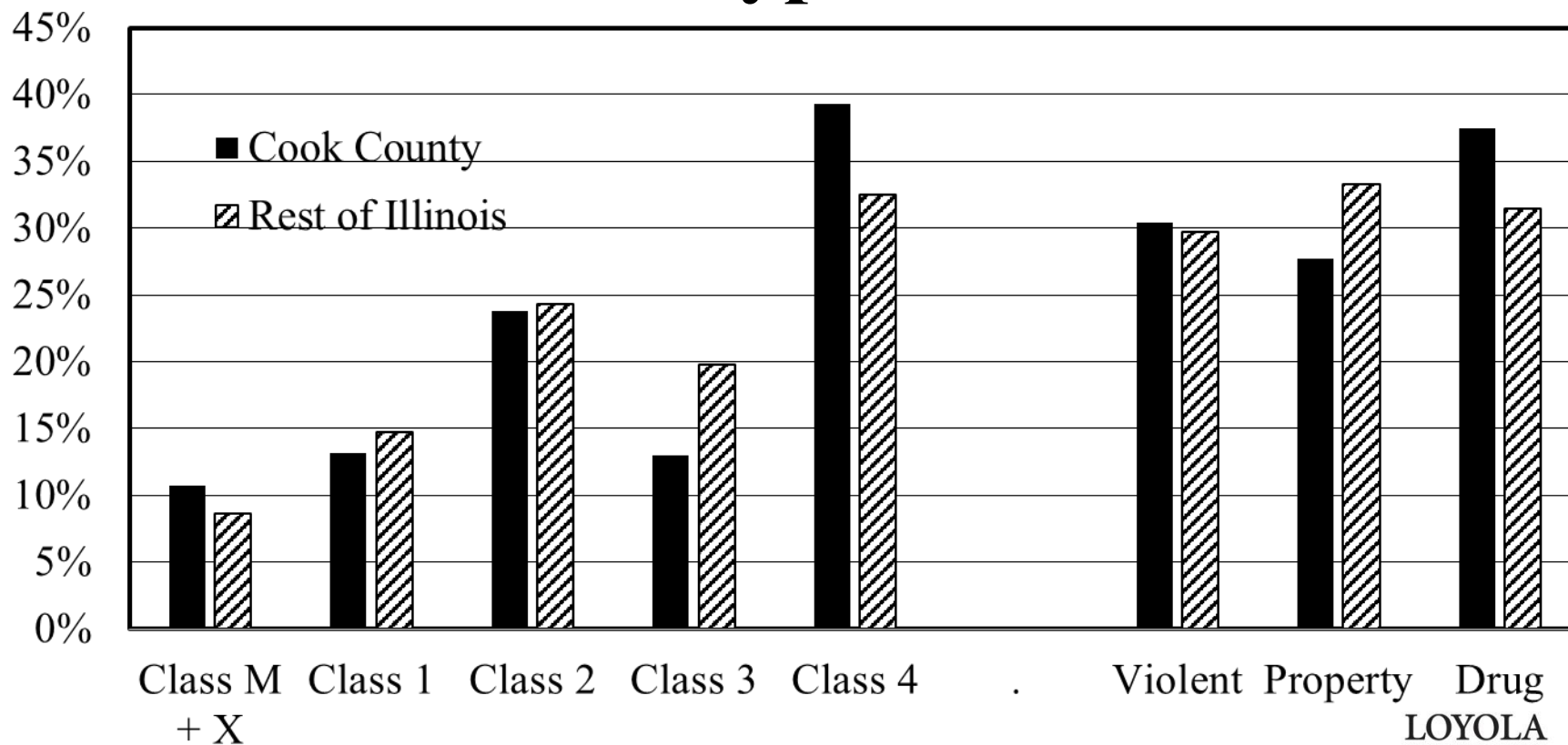
Figure 7: Percent of Court Admissions to IDOC from Cook County, by SFY



Analyses by David E. Olson, Ph.D. & Donald Stemen, Ph.D., of data provided by the IDOC Planning and Research Unit.



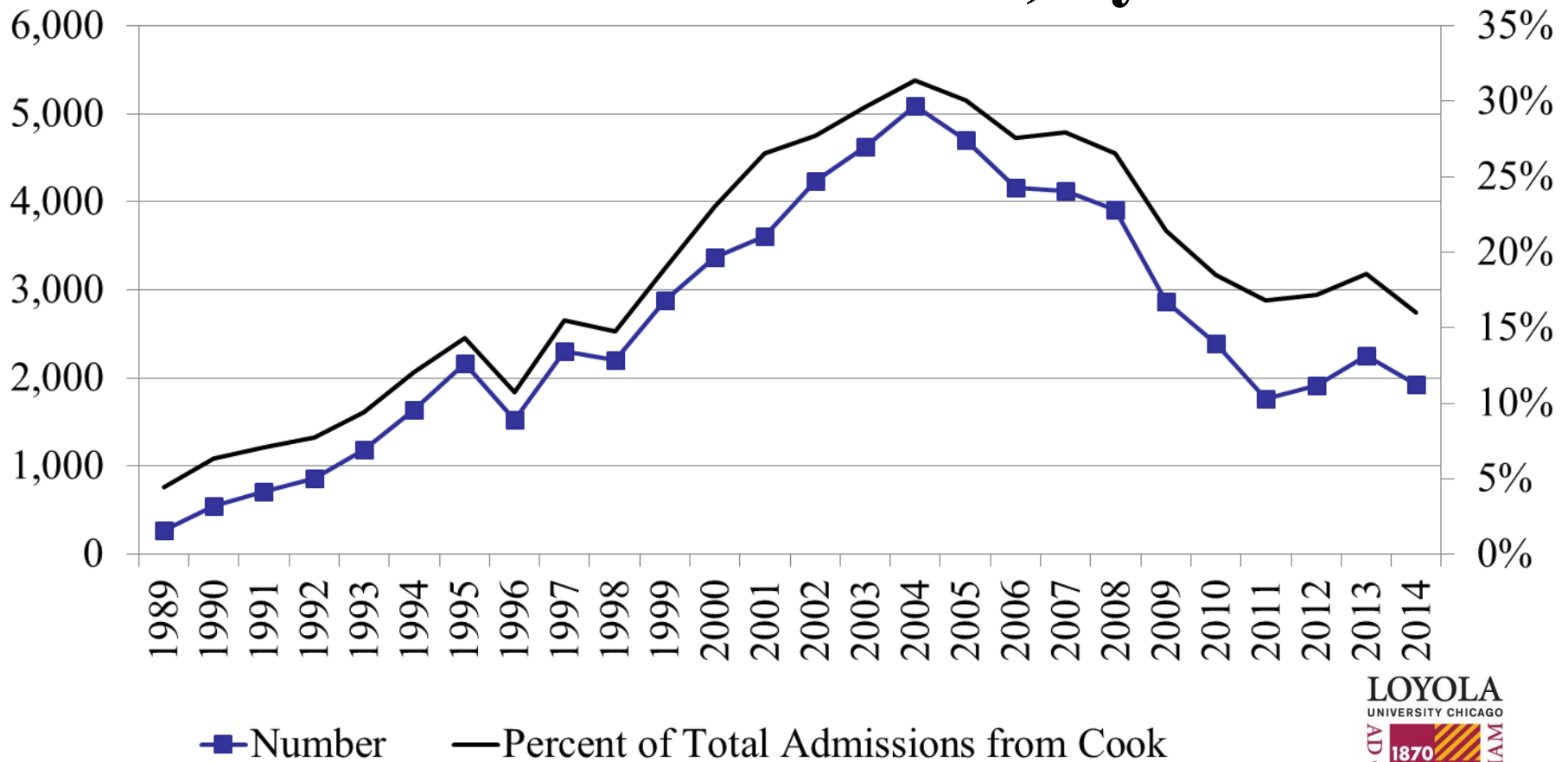
Figure 8: Cook County vs. Rest of Illinois, SFY 2014 Court Admissions to IDOC, by Offense Type & Class



Analyses by David E. Olson, Ph.D. & Donald Stemen, Ph.D., of data provided by the IDOC Planning and Research Unit.



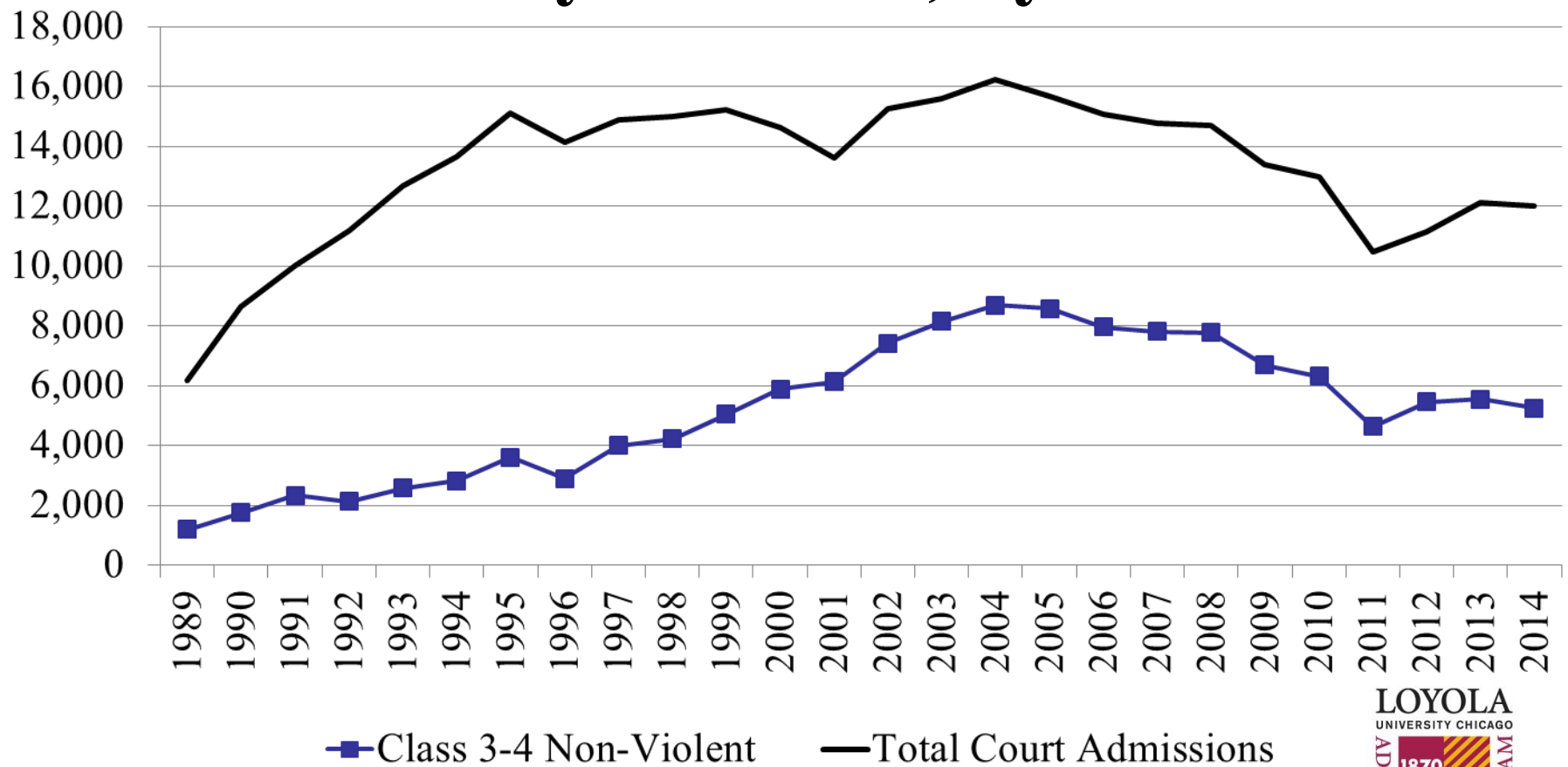
Figure 9: Court Admissions to IDOC from Cook County, Class 4 Possession of a Controlled Substance, by SFY



Analyses by David E. Olson, Ph.D. & Donald Stemen, Ph.D., of data provided by the IDOC Planning and Research Unit.



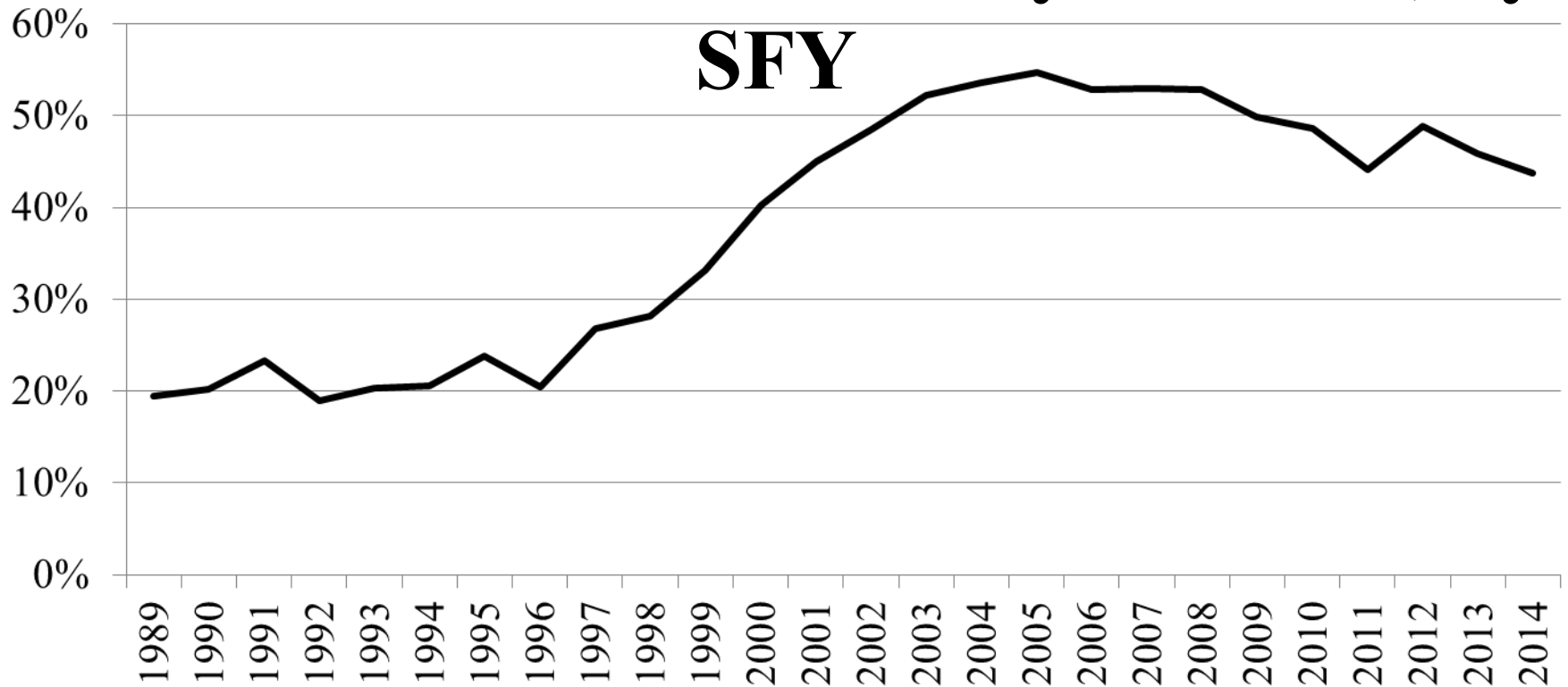
Figure 10: Court Admissions to IDOC from Cook County, Total & Class 3/4 Non-Violent Felony Offenses, by SFY



Analyses by David E. Olson, Ph.D. & Donald Stemen, Ph.D., of data provided by the IDOC Planning and Research Unit.



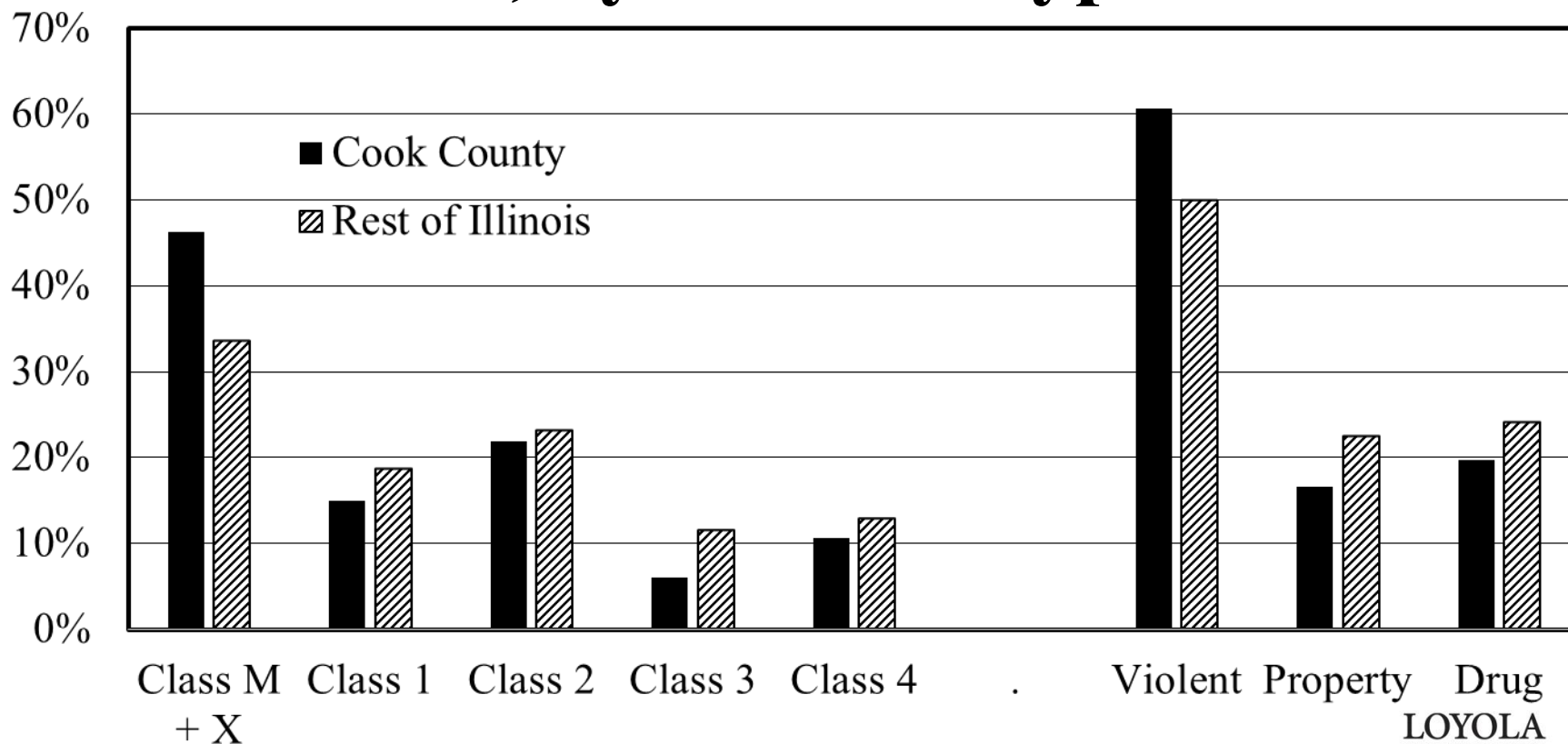
Figure 11: Percent of Court Admissions to IDOC from Cook County Accounted for by Class 3/4 Non-Violent Felony Offenses, by SFY



Analyses by David E. Olson, Ph.D. & Donald Stemen, Ph.D., of data provided by the IDOC Planning and Research Unit.



Figure 12: Cook County vs. Rest of Illinois, SFY 2014 IDOC *Population*, Court Admissions, by Offense Type & Class

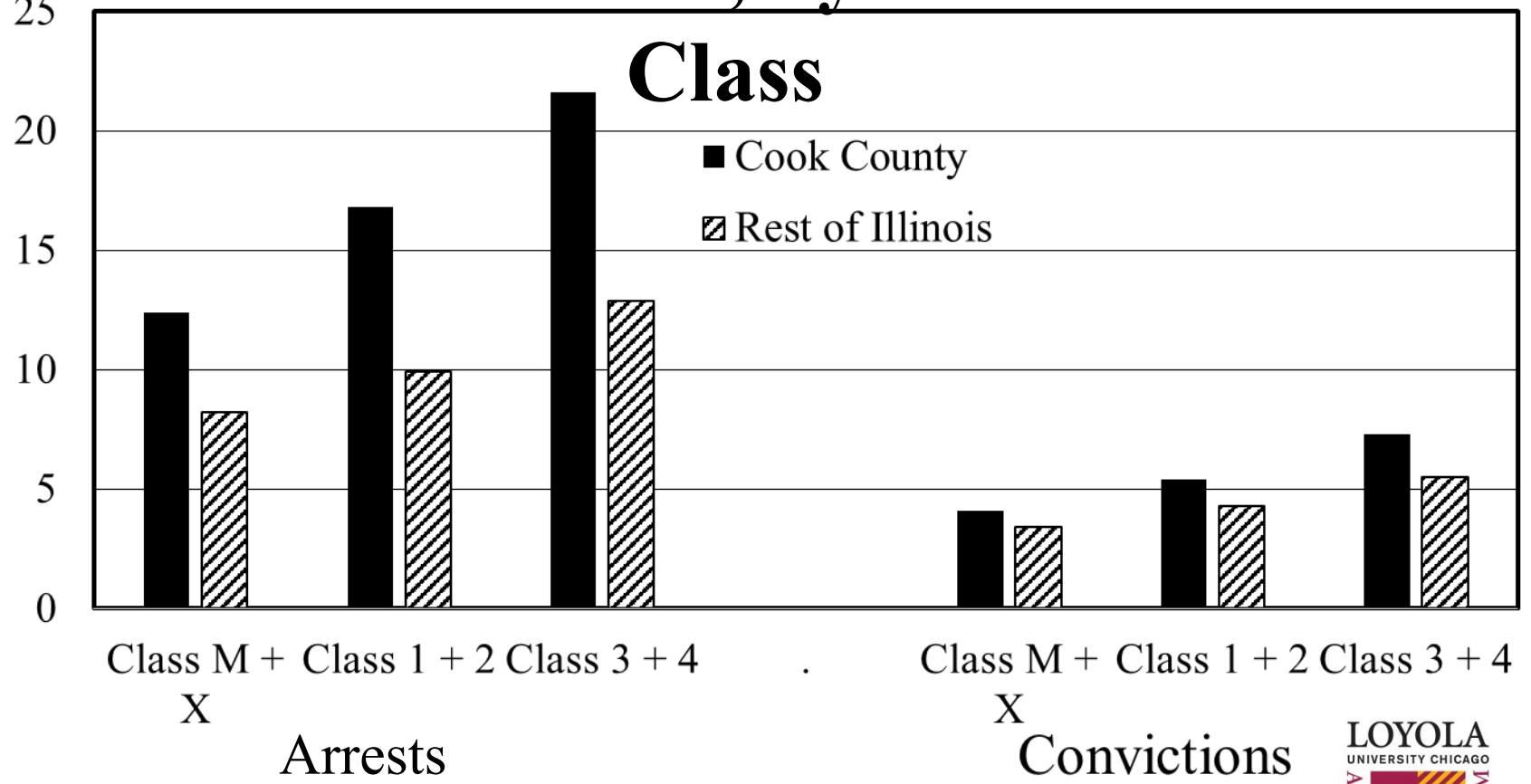


Analyses by David E. Olson, Ph.D. & Donald Stemen, Ph.D., of data provided by the IDOC Planning and Research Unit.



Figure 13: Criminal History of Cook County vs. Rest of Illinois, SFY 2009-2011 Court Admissions to IDOC, by Current Offense

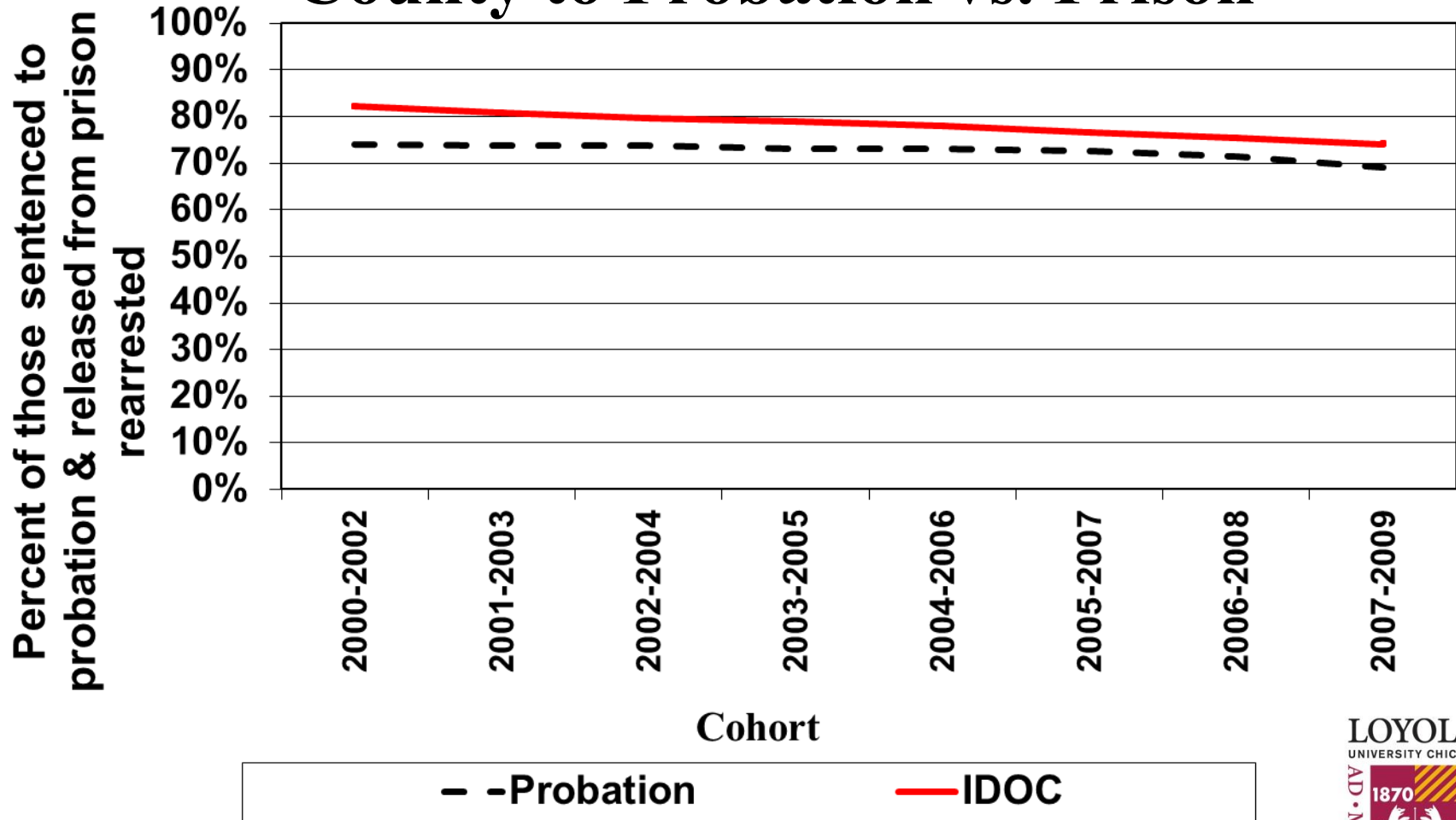
Average Prior Arrests and Convictions



Analyses by David E. Olson, Ph.D. & Donald Stemen, Ph.D., of data generated from the ICJIA on-line recidivism analysis tool.



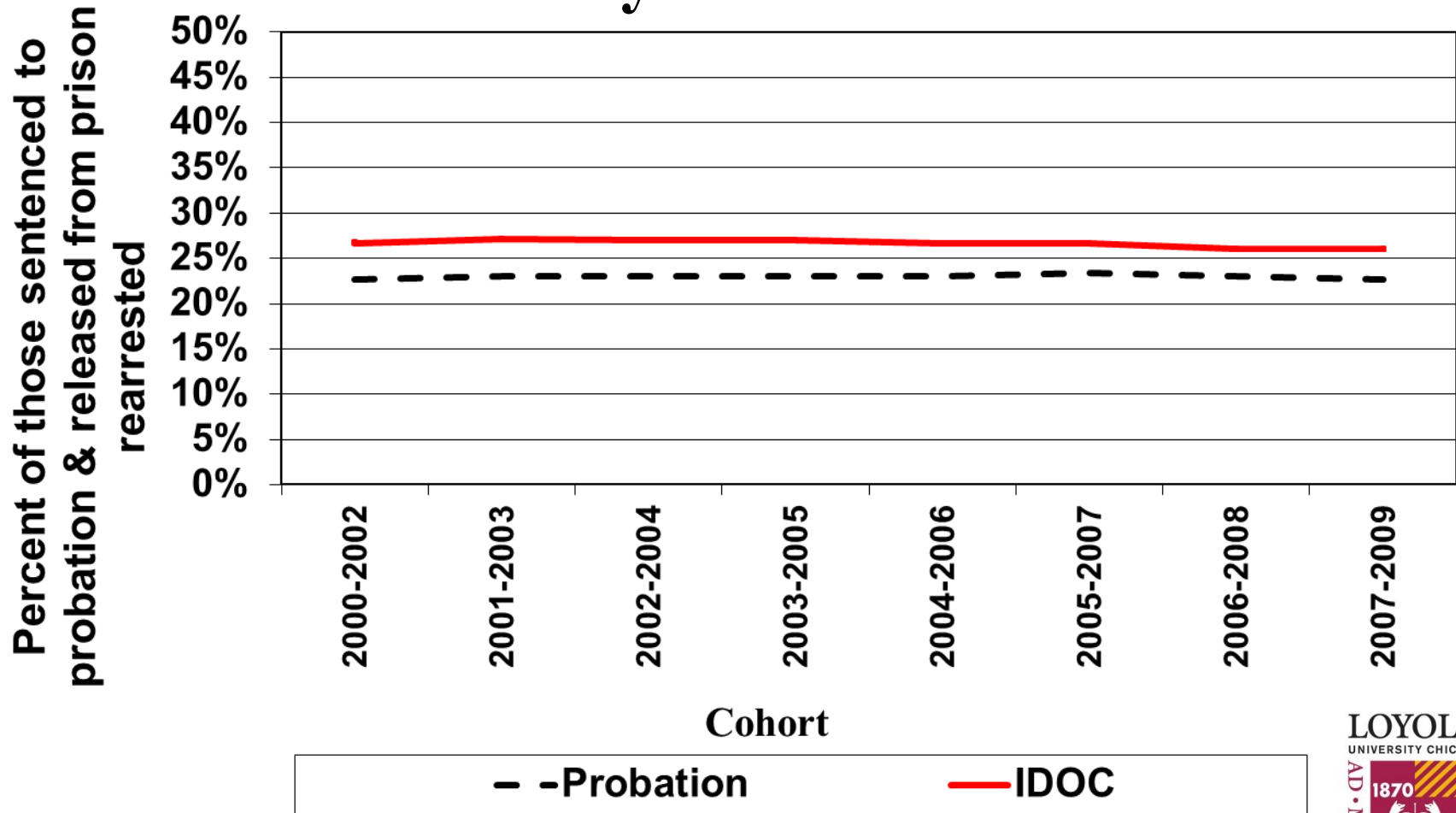
Figure 14: Recidivism (any new arrest within 3 years) Among Class 1-2 Felons, Sentenced in Cook County to Probation vs. Prison



Source: Analyses by David E. Olson, Ph.D. & Donald Stemen, Ph.D., of data generated from the ICJIA on-line recidivism analysis tool.



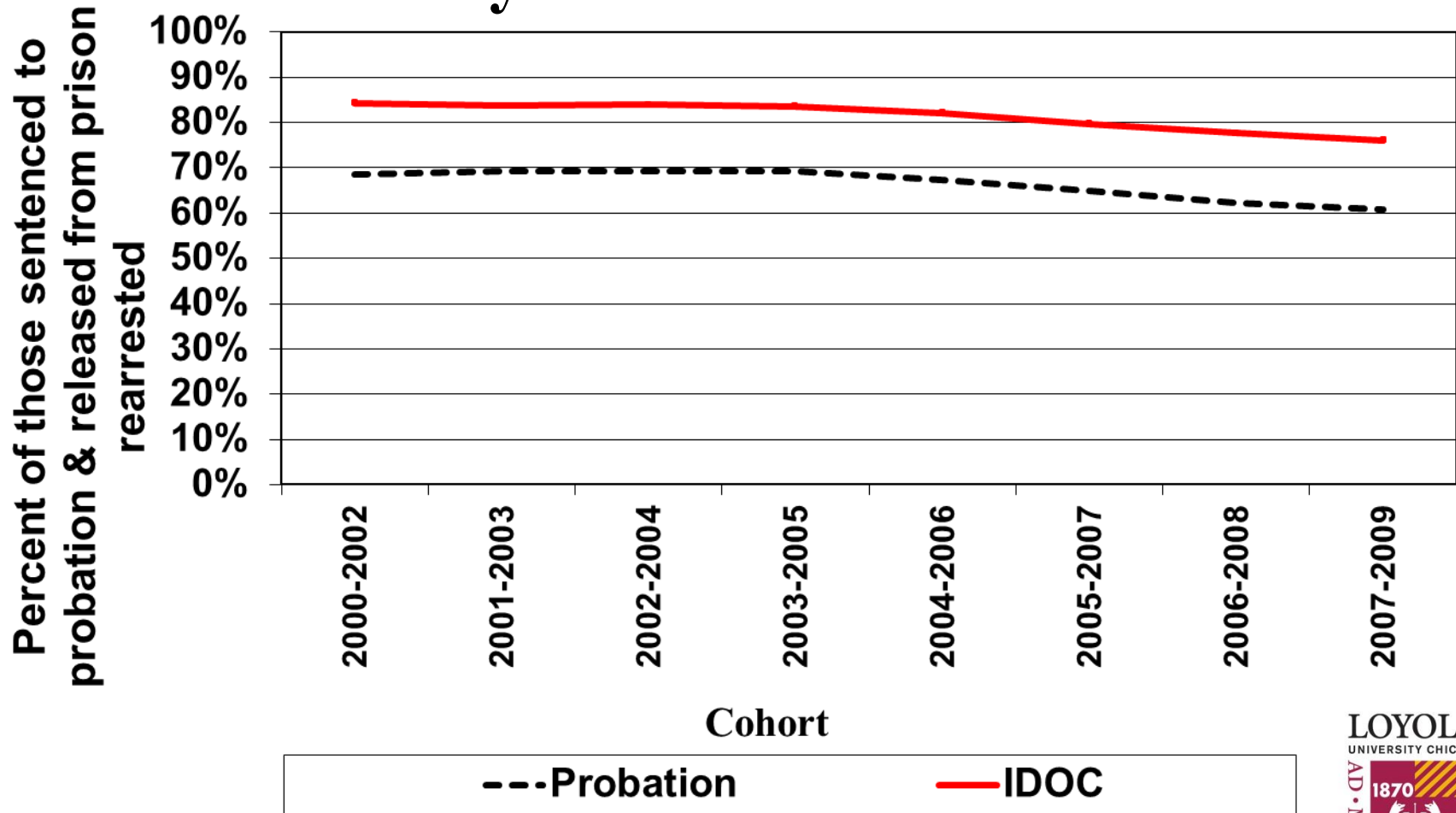
Figure 15: Recidivism (any new *violent* arrest within 3 years) Among Class 1-2 Felons, Sentenced in Cook County to Probation vs. Prison



Source: Analyses by David E. Olson, Ph.D. & Donald Stemen, Ph.D., of data generated from the ICJIA on-line recidivism analysis tool.



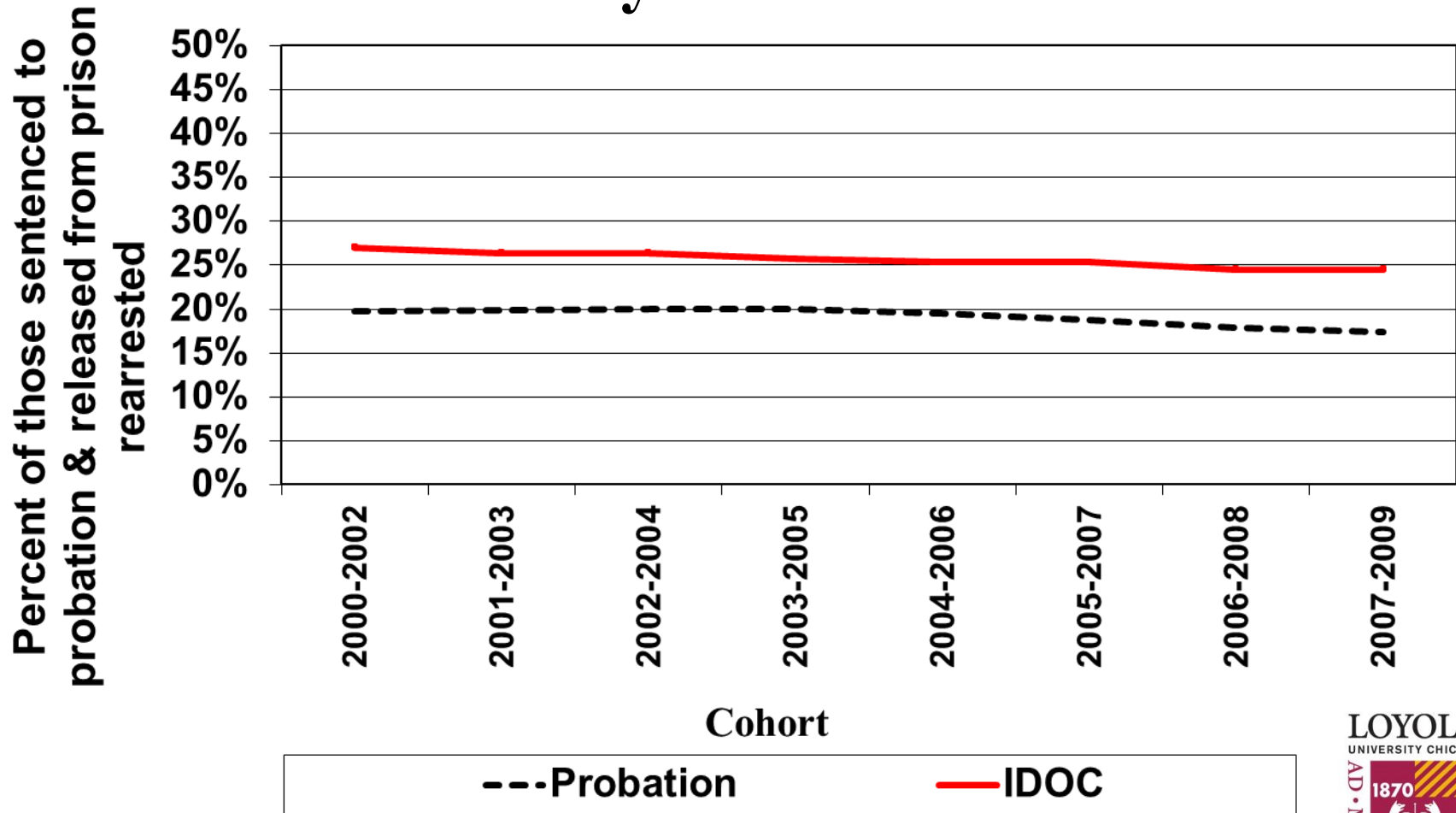
Figure 16: Recidivism (any new arrest within 3 years) Among Class 3-4 Felons, Sentenced in Cook County to Probation vs. Prison



Source: Analyses by David E. Olson, Ph.D. & Donald Stemen, Ph.D., of data generated from the ICJIA on-line recidivism analysis tool.



Figure 17: Recidivism (any new *violent* arrest within 3 years) Among Class 3-4 Felons, Sentenced in Cook County to Probation vs. Prison



Source: Analyses by David E. Olson, Ph.D. & Donald Stemen, Ph.D., of data generated from the ICJIA on-line recidivism analysis tool.

